



Blancco Management Console

Centralized, Secure Point of Control for Report Collection and Data Erasure Verification

Blancco Management Console provides data erasure management access to internal users, administrators and support staff. Designed to be a centralized and secure point of control, you can view all data erasure licenses, create and modify all types and levels of users, monitor erasure activities and collect extensive tamper-proof, auditable reports.

Benefits

Safely Monitor Data Erasure Activities and Report Precisely on Results

Perform due diligence on necessary data erasure requirements and report on best practices among internal and external stakeholders. Verify proof of compliance with national and international regulatory agencies, including PCI DSS, HIPAA, FedRAMP and Cloud Security with a tamper-proof audit trail.

Streamline Internal Processes and Strengthen Transparency

Simplify and refine internal workflows, processes and policies and strengthen knowledge and awareness within the business. Validate rationale for resource planning and budget allocation for both during-life and after-life asset management and reduce overall costs of asset management.

Integrated into Blancco Data Erasure Management

Compatible with all products in the Blancco Data Erasure Management suite, information can be displayed from multiple sources in a unified display. This also allows for centralized control and reporting of all erasure activities.

Features

Easy-to-use, convenient user interface.

Single pane of glass to Blancco Data Erasure Management.

REST API integration with existing AMS/ERP systems and external databases.

Assimilation with asset lifecycle management.

Digitally signed, tamper-proof reporting.



Technical Specifications

Centralized Process Management

- Web service interfaces (REST API) for seamless integration with existing AMS/ERP systems Full automation requiring minimum user interaction
- AD integration for built-in role management and unlimited user hierarchy
- Remote live management function to control up to 50 erasures simultaneously with one single command
- Over 250 hardware details available

Reporting

- Comprehensive data erasure reports and statistics
- Full hardware and software details recorded (including over 250 hardware specifics)
- Easy report importing, exporting, editing, emailing and validating

Technical Specifications

- Full traceability with detailed information including action logs for each individual report
- Reports available in CSV, PDF and XML formats
- Fast and user friendly report searching (including search by date)
- Add user-created reports for non-functioning assets
- Automatic report fetching with live management

Auditing

- Compliant (legal) erasure evidence
- Comprehensive asset and chain of custody tracking
- Full transparency of the erasure process

Access Control and User Management

- Extensive database support
- Easy user management, including support for Active Directory

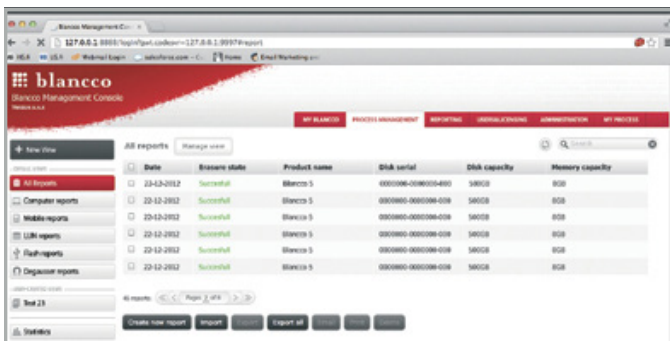
- Customizable user rights
- Various user levels and access such as Admin, Manager and User. Groups can also be created for report sharing purposes
- Built-in erasure license management

Language Support

- English
- French
- German
- Japanese
- Russian
- Spanish

Minimum Hardware Requirements

- Dual Core processor or better
- 2-4 Gb RAM or better
- Network Interface Card
- Display
- Keyboard and mouse
- Free USB port
- Java Runtime Environment (OS independent)



Copyright © 2017 Kroll Ontrack Inc. All Rights Reserved.